

XP2

P3	P2
P5	P7
P8	P26
P27	P31
P32	P25
P30	P28
P29	AGND
DAC2	DAC1
AN3	AN4
AN1	AN2
+3VR	AGND
AN5	AN6
AN3	AN4
AN1	AN2
A	B
Y	Z
A	B
U7R	U7T
CAN1_H	CAN1_L
GND	L1

DAC output 0.3V

ADC input 0.3V

ADC input 0.45V

Universal serial driver, 2

RS 485

UART 7

Power supply L1 +5.43V

XP3

P18	P12
P24	P13
P23	P22
P21	P4
P6	P16
P15	P1
P10	P11
P9	P20
P17	P19
P14	DGND
U5T	U5R
U4T	U4R
U1T	U1R
Y	Z
A	B
Y	Z
A	B
SH	3.3
CAN2_H	CAN2_L
GND	L2

UART 5

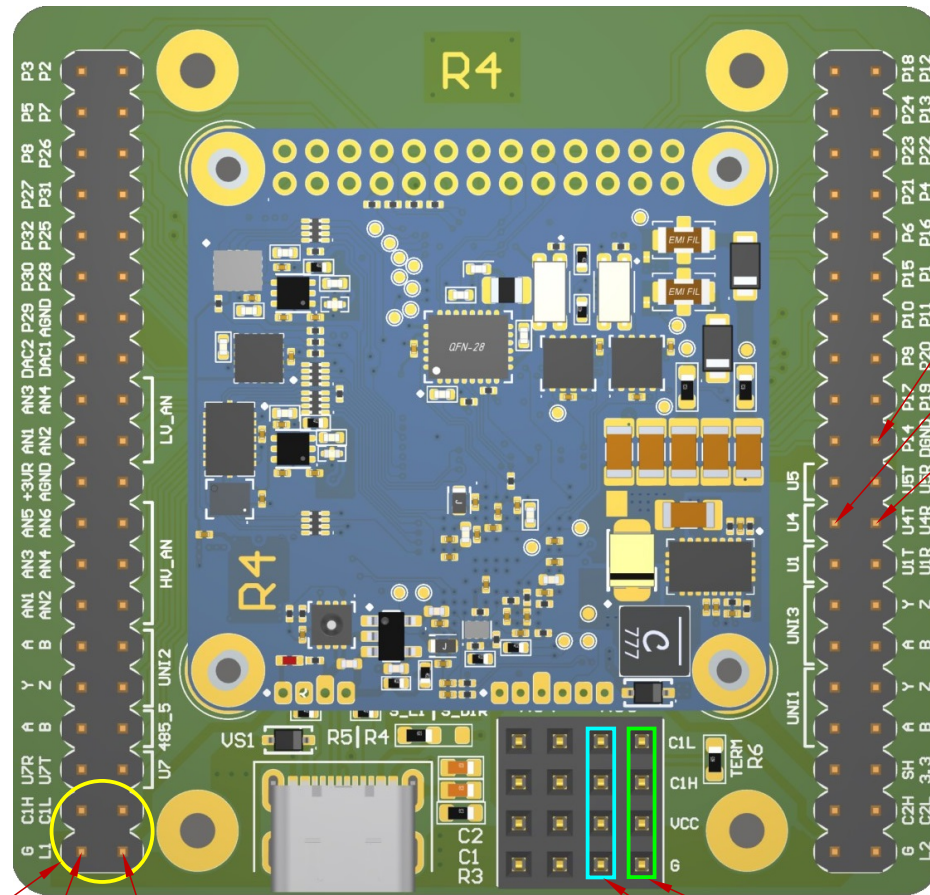
UART 4

UART 1

Universal serial driver, 3

Universal serial driver, 1

Power supply L2 +5.43V



UART_GND

UART4_TX

UART4_RX

GHANTA Module

CAS Module

GPS Module

GND

Power L1_IN

XS3

CAN1_L	CAN1_L	CAN1_L	CAN1_L
CAN1_H	CAN1_H	CAN1_H	CAN1_H
Vcc	Vcc	Vcc	Vcc
GND	GND	GND	GND